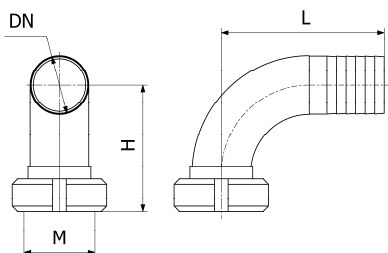
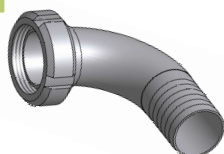


Famille : 08

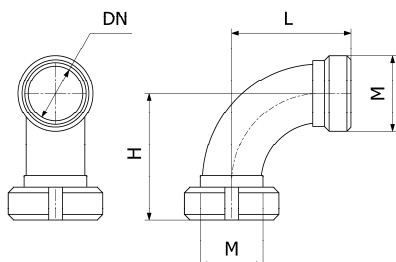
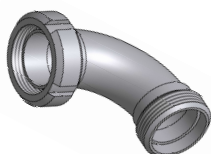
### Coude Femelle à ligaturer + joint DiOXiPPÉ



DN	M	L	H	Poids (kg)	Référence	Prix unit.
40	55x3	120	88		3191	36,40 €
50	67x3	145	102		3192	48,15 €
70	90x3.5	175	124		3193	78,40 €

Famille : 08

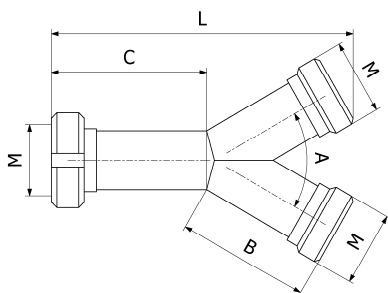
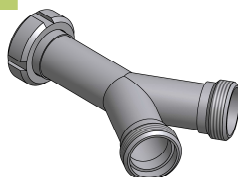
### Coude Male / Femelle + joint DiOXiPPÉ



DN	M	L	H	Poids (kg)	Référence	Prix unit.
40	55x3	83	88		3194	36,40 €
50	67x3	98	103		3195	48,15 €
70	90x3.5	118	123		3196	78,40 €

Famille : 08

### Y Femelles 2 Males + joint DiOXiPPÉ



DN	M	L	C	A	B	Poids (kg)	Référence	Prix unit.
40	55x3	174	114	60°	98	0.98	3197	130,60 €
50	67x3	210	118	60°	106		3198	149,65 €
70	90x3.5	252	148	60°	136		3199	197,60 €